

State-of-the-art Productive  
Document Processors

**Aficio™ 3035/3045**



**RICOH**  
Image Communication

# Productivity, Security & Efficiency for Any Office Environment

How smooth would your office workflow run if you could use a central office system taking care of all document production and management? Designed to do exactly this, the Aficio™3035/3045 make sure you save time, money and space. Opening up new possibilities for enhanced communication, paper- and server-less faxing, 'scan to NCP' and professional output finishing are but a few of their impressive capabilities. Their network connectivity is flexible, their document management and web based device monitoring impressive. And of course... these user friendly multifunctional devices include superb print, copy, fax and scan functionality as well! The Aficio™3035/3045 are all-round office solutions that will keep you in front for years to come.

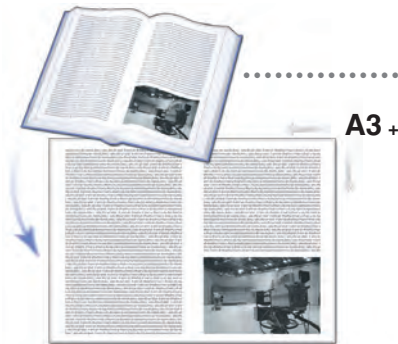


# Multiply your Productivity

Speeding up your workflow does not depend on fast output alone. In fact, only the optimisation of your entire document handling process can lead to a more efficient office workflow. The Aficio™3035/3045 tackle all the elements individually to make sure you obtain the power and efficiency to handle any workgroup or office challenge.

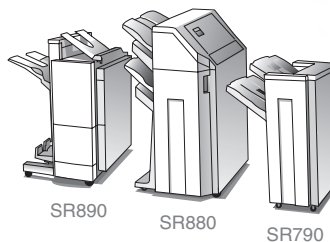
## User Friendly Multi Page Input

To copy or scan large jobs and documents up to A3 size in one run, the Aficio™3035/3045 boast a fast feeding 80-sheet ARDF. Books and magazines, on the other hand, can be copied straight from the platen glass.



## Versatile Finishing

To keep your professional document creation in house and produce your own presentation material, reports and folders, the Aficio™3035/3045 can be equipped with a 1,000-sheet finisher (SR790) or 2,500-sheet multi-tray finisher (SR880). You can even create high quality booklets if you opt for the 1,150-sheet booklet finisher (SR890).



SR890

SR880

SR790

2 x 500 sheets

2 x 500 sheets

## Top Productivity

With output speeds of 35/45 pages per minute equaling duplex speeds, no deadline is unfeasible for these systems. Warm up is incredibly fast too at 15/20 seconds while your first copy is in the output tray in 4.3/3.6 seconds. No valuable time will be wasted.

## Continuous Operation

Large print or copy jobs are easily taken care of by the systems' impressive maximum paper capacity of 3,550 sheets. Refills are down to an absolute minimum. As the systems alert you in case paper or toner run out, you will be able to keep a constant status overview of your network devices.

## Outgoing Faxes from your PC

Via the LAN fax function, you can send fax messages directly from your own PC. This saves time and results in better output quality at the receiving end. To reduce the distribution of printed faxes, faxes can also be forwarded by e-mail.

## Incoming Faxes on your PC

Digitise your fax workflow and efficiency is yours. Converted into TIFF files, inbound faxes can be easily transmitted via the local network or forwarded to any e-mail address. As a result, the fax operator's work is minimised.



## Fax/E-mail Address Book Maintenance

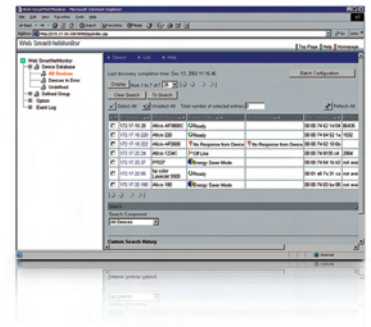
You can register and maintain your fax/e-mail address book (LDAP) in the Hard Disk Drive (HDD) directly from the operation panel or through Web SmartDeviceMonitor™/Web Image Monitor. New contacts can be added, address data can be organised or the entire address book can be exported.

## Straightforward & User Friendly

The Aficio™3035/3045 stand for efficient document handling. The systems' large LCD touch screen intuitively guides you through all copy, print, fax and scan jobs. In fact, all of Ricoh's multifunctional devices operate in the same way: if you can use one system, the others present no surprises.

## Advanced Device Monitoring

Using Web SmartDeviceMonitor™, the status of networked peripherals can be monitored and checked through web browsers. Additionally, IT managers and network administrators can set user privileges, obtain complete job statistics and restrict usage.



1,500 sheets

## Excellent Network Connectivity

The Aficio™3035/3045 suit virtually any network environment. A NIB and USB interface come standard embedded in the printer controller board. For optimum connectivity, FireWire (IEEE 1394), Bluetooth, Wireless LAN and bi-directional IEEE 1284 are optionally available.



## Our Earth, Our Tomorrow

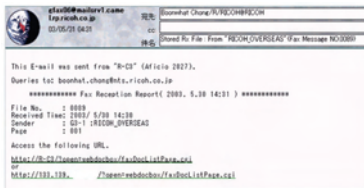
Like all Ricoh products, the Aficio™3035/3045 reflect Ricoh's commitment to the environment with the usage of toxic free materials (prohibiting lead, chromium, cadmium, as well as PVC)\*. Low energy toner production adds to their environment conscious design. Significant energy savings are obtained thanks to advanced new power saving modes.

*The image on these pages is not a real photograph and slight differences in detail might appear.*

\* In compliance with EU RoHS directive (RoHS: Restriction of Hazardous Substances, effective from July 2006).

# High Performance Document Handling

To meet your demands, now and in the future, upgradable office equipment is essential. The Aficio™3035/3045 have it all: they are fully customisable and offer a variety of new, exciting benefits. With a multifunctional device that not only incorporates advanced functionalities but also provides the distribution possibilities and security you require, you have it all at your fingertips. The Aficio™3035/3045 make perfect business sense.



Prevent a huge e-mail inbox and enjoy the opportunity to download files at a later time: 'scan to URL' allows you, as receiver, to check the e-mail and decide whether and when to download the file.

## Unique & Custom Made

Expanding your system with a printer/scanner unit, a fax module, finishers, extra paper trays, software packages... basically anything is possible. Simply build your customised system around your workflow to suit your precise document processing needs. Should you require extra functionality at a certain point, capabilities can easily be added.

## Advanced Printing

How easy would it be if you could be assured that when you print confidential documents, they stay secret? Locked Print™ makes sure the machine keeps your document until you release it with your password. To avoid prints being left on the tray and eliminate paper waste, the Hold Print function is very helpful. Should you choose the systems' Adobe® PostScript® 3™ option, you obtain PDF Direct Print, a handy tool to reduce network traffic and increase total productivity.

## Handy Workflow Tools

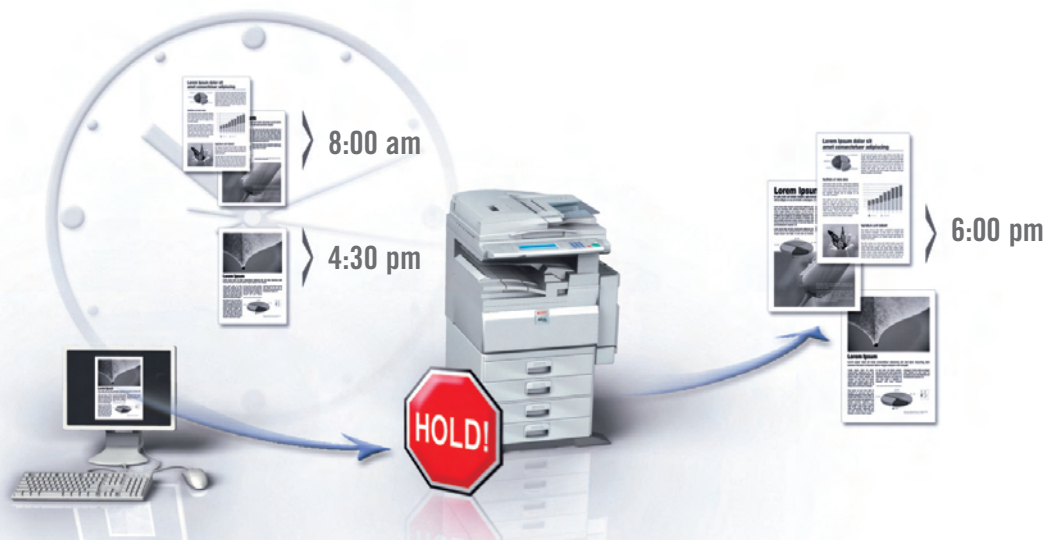
To be able to handle your document workflow professionally, several document management utilities are available. You can store frequently used copy, print, fax and scan documents on the machine's document server for re-use. Using DeskTopBinder™ Lite, you can merge documents of different formats into one file and view, print and re-distribute it all digitally.

## Efficient Document Distribution

For a well-structured document workflow, distribution tools have become necessary. If you need to send digitised files, 'scan to e-mail' is available. Should you need to send large files, you can do so via 'scan to folder' and send up to 2 GB. As third option, 'scan to URL' allows you, as receiver, to check the e-mail and decide whether and when to download the file. This prevents a huge e-mail inbox and offers the opportunity to download files at a later time.

## Safeguard Access & Information

As office products have turned into advanced network devices, security threats have become a major concern. The Aficio™3035/3045 offer Windows® authentication which allows a user with access to the regular network, to also access the MFP. Other authentication methods have been developed to suit any network environment. To safeguard the data on the Hard Disk Drive, a Data Overwrite Security function is applicable. This unit ensures the hidden temporary data is overwritten with random data after completion of a job. Any security threat will be eliminated!



The Aficio™3035/3045 can hold print jobs you send during the day together with their settings. You simply release them on the device at a convenient time. As a 'virtual mailbox', this function prevents mixed-up output and keeps your prints confidential.



# Aficio™ 3035/3045

## Specifications



### COPIER

Copying process:	Twin laser beam scanning & electro photographic printing	
CPU:	RM7035C-466 466 MHz	
Copy speed:	35/45 copies per minute	
Resolution:	600 dpi	
Multiple copy:	Up to 999	
Warm up time:	15/20 seconds	
First output speed:	4.3/3.6 seconds	
Zoom:	25 - 400% (in 1% steps)	
Memory:	Standard:	128 MB + 40 GB Hard Disk Drive
	Maximum:	384 MB + 40 GB Hard Disk Drive
Paper input capacity:	Standard:	2 x 500-sheet paper trays 1 x 50-sheet bypass tray
	Maximum:	3,550 sheets
Paper output capacity:	Standard:	500 sheets
	Maximum:	2,875 sheets
Paper size:	A6 - A3	
Paper weight:	Paper tray 1 & 2/duplex tray:	64 - 105 g/m <sup>2</sup>
	Paper tray 3 & 4:	60 - 105 g/m <sup>2</sup>
	Bypass tray:	52 - 163 g/m <sup>2</sup>
Dimensions (W x D x H):	670 x 650 x 720 mm	
Weight:	Less than 79 kg	
Power source:	220 - 240 V, 50/60 Hz	
Power consumption:	Operation:	Maximum 1.5 kW
	Energy saver mode:	Aficio 3035 130 W Aficio 3045 149 W
	Auto Off mode:	8.5 W

### PRINTER/SCANNER (option)



### Printer

Print speed:	35/45 prints per minute	
Printer language:	Standard:	PCL5e, PCL6, RPCS™
	Option:	Adobe® PostScript® 3™
Resolution:	Maximum 600 x 600 dpi (2,400 dpi equivalent x 600 dpi with smoothing)	
Interface:	Standard:	USB 2.0
	Option:	Ethernet 10 base-T/100 base-TX Bi-directional IEEE 1284 FireWire (IEEE 1394) Wireless LAN (IEEE 802.11b) Bluetooth
Memory:	384 MB + 40 GB Hard Disk Drive	
Network protocol:	TCP/IP, IPX/SPX, SMB, AppleTalk	
Supported environments:	Windows® 95/98/Me/NT4.0/2000/XP/Server 2003 Novell® NetWare® 3.12/3.2/4.1 4.11/5.0/5.1/6/6.5 UNIX Sun® Solaris 2.6/7/8/9/10 HP-UX 10.x/11.x/11iv1/11i SCO OpenServer 5.0.6/5.0.7 RedHat® Linux 6.x/7.x/8.x/9.x/Enterprise IBM® AIX v4.3/5L v5.1/5L v5.2/5.3 Macintosh 8.6 or later (OS X Classic) Macintosh X v10.1 or later (native mode)	



### Scanner

Scan speed:	Maximum 52 originals per minute (MH, A4/LEF)
Resolution:	Maximum 600 dpi (TWAIN: 1,200 dpi)
Original size:	A5 - A3
Output formats:	PDF/JPEG/TIFF
Bundled drivers:	Network TWAIN
Scan to e-mail:	SMTP, TCP/IP
Destination addresses:	Maximum 500 per job
Stored destination addresses:	Maximum 2,000
Address book:	Via LDAP or locally on Hard Disk Drive
Scan to folder:	SMB, FTP, NCP protocol (with login security)
Destination:	Maximum 50 folders per job



### Software\*

SmartDeviceMonitor™, Web SmartDeviceMonitor™  
Web Image Monitor, DeskTopBinder™ Lite  
\* Bundled with printer/scanner option.



### FAX (option)

Circuit:	PSTN, PBX	
Compatibility:	ITU-T (CCITT) G3, additional G3 option ITU-T (T.37) Internet Fax ITU-T (T.38) Internet Fax	
Modem speed:	Maximum 33.6 Kbps	
Resolution:	Standard/detail:	200 x 100/200 dpi
	Superfine:	400 x 400 dpi (option)
Compression method:	MH, MR, MMR, JBIG	
Scanning speed:	Less than 0.43 seconds (200 x 100/200 dpi, A4/SEF)	
SAF memory:	Standard:	4 MB
	Maximum:	28 MB
Memory backup:	Yes	

### OTHER OPTIONS

Platen cover, 80-sheet Automatic Reverse Document Feeder, 2 x 500-sheet paper trays, 1,500-sheet large capacity tray, 125-sheet one-bin tray, 1,000-sheet finisher (3 position stapling), 2,500-sheet multi-tray finisher (4 position stapling), 1,150-sheet booklet finisher (4 position stapling), 2/4 hole punch unit, 2<sup>nd</sup> Super G3 port, Adobe® PostScript® 3™, Wireless LAN (IEEE 802.11b), Bluetooth, FireWire (IEEE 1394), Bi-directional IEEE 1284, Data Overwrite Security Unit, Copy Data Security Unit, File Format Converter, User Account Enhance Unit, Browser Unit, VM Card, Key Counter Bracket, PI Board, Scanner accessibility option, Fax Marker, Professional software solutions

For availability of models, optional apparatus and software, please consult your local Ricoh supplier.



Our earth, Our tomorrow

ISO9001: 2000 certified  
ISO14001 certified

Ricoh has determined that these products meet the ENERGY STAR guidelines for energy efficiency.

All brand and/or product names are trademarks of their respective owners.

Specifications and external appearance are subject to change without notice. The colour of the actual product may vary from the colour shown in the brochure.

**RICOH**  
Image Communication

For more information, please contact:

RICOH ASIA PACIFIC PTE LTD  
260 Orchard Road #15-01/02  
The Heeren, Singapore 238855  
Phone: +65 6830 5888  
Fax: +65 6830 5830

[www.ricoh.com.sg](http://www.ricoh.com.sg)