

you can
Canon

iR3320i/iR2220i SERIES

*Dynamic Java-based devices
for all your workflow needs*



OFFICIAL PARTNER



Adding intelligent communication to your print and network environment

The Canon iR3320i and iR2220i revolutionise office solutions. These next generation products utilise Java language within Canon's Multi-functional Embedded Application Platform (MEAP). Investing in MEAP your company will enjoy the advantages long into the future. You can customise your own device with bespoke or off the shelf applications to meet your business needs.



The iR3320i/iR2220i offer intelligent communication features to enhance efficiency. Easy-to-use workflow functions enable you to capture, manage and distribute all your documents digitally. Quite simply, the network-ready iR3320i/iR2220i fulfils the role of a compact and cost-efficient office communication centre.

SOLUTIONS FOR EVERY NEED

The iR3320i/iR2220i combine scan, print, copy and communication functions in one device. This unique capability revolutionises the distribution of e-mails, faxes and existing electronic files, enabling the organisation as a whole to cut down on forwarding, filing and paper costs.

TOTAL COST OF OWNERSHIP

By combining a highly versatile system with flexible and supported solutions, Canon enables you to secure a maximum Return on Investment while reducing Total Cost of Ownership (TCO). Our aim is to deliver a total solution offering immediate benefits in terms of increased productivity, and built-in versatility to meet all your future needs as your business grows. With the iR3320i/iR2220i you can guarantee that your organisation will have a competitive advantage – both in the short and long term.

INFORMATION DISTRIBUTION

Managing the vast variety and sheer quantity of electronic documentation that your organisation handles has never been easier.

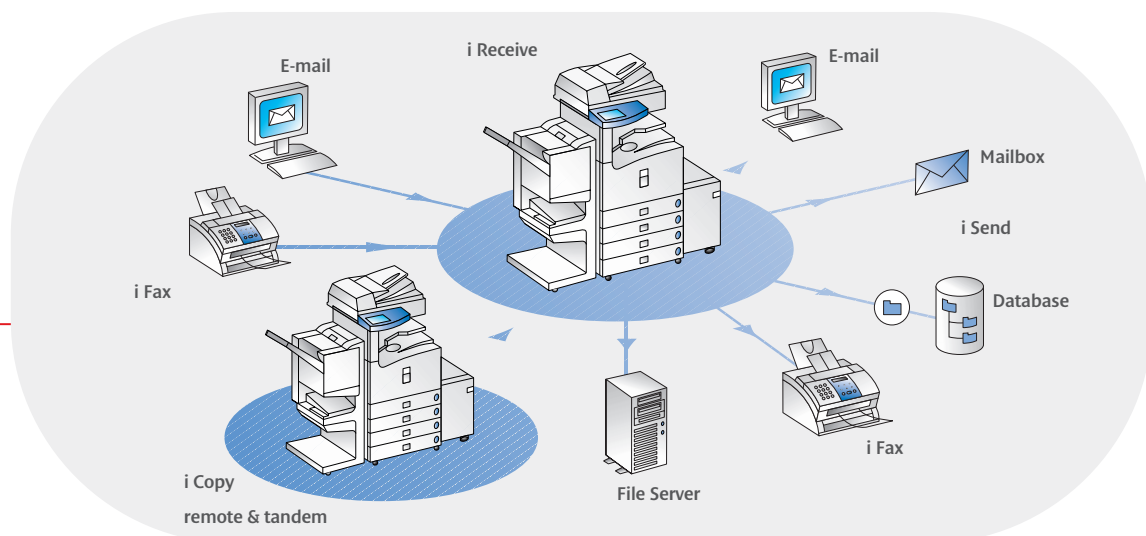
Documents can be scanned and sent to multiple destinations in a single operation.

These include e-mail addresses, network files, regularly used folders, mailboxes, faxes and internet faxes. To save even more time, you can download all your existing e-mail addresses – up to 1,800 – directly into your iRi system.

The Scanned Image Preview function enables you to check that a document has been scanned correctly before sending.

LDAP ENHANCES COMMUNICATION CAPABILITIES FURTHER

Intelligent Sending is even easier and more efficient, because both the iR3320i/ iR2220i support LDAP (Lightweight Directory Access Protocol). This integrates the ‘send to e-mail’ function with your company address book, and enables more efficient management of accessible e-mail addresses. Multiple local address books no longer need to be manually updated.



USER AUTHENTICATION

Secure control and tracking of important documents both internally and externally is absolutely critical. The iR3320i/iR2220i have the ability to automatically identify and authenticate each user with your active directory service.

Device administrators can select the level of authentication required from Department ID Management, Simple Device Login to Single Sign On.

ENHANCED MAIL BOX SECURITY

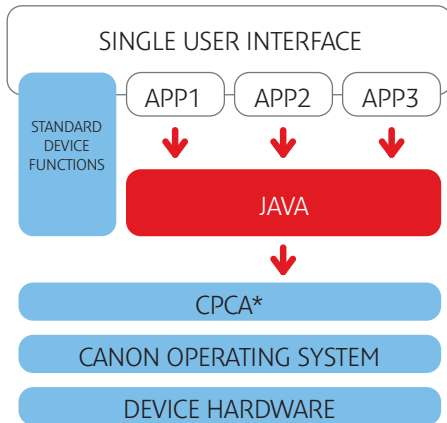
Secure control and tracking of important documents both internally and externally is absolutely critical. Documents can be printed securely directly from your PC via the secure print function, where printing can only begin when the correct password is given at the device. If you don't want the documents immediately, you can temporarily hold data on the hard disk of the device. Only accessing them from a password protected mailbox, which can be created for individuals or groups.

THE NEXT GENERATION

MEAP (multi-functional embedded application platform) is a unique platform designed to meet the next generation business needs. It's a way to deliver true customisation in an affordable and highly effectively way. Java programmes can run anywhere - whether in a network, on a server or on a client's Java Virtual Machine.



MEAP STRUCTURE



TRUE CUSTOMISATION AND EASY INTEGRATION

MEAP is based on familiar Java language which is ideal for developing complete custom applications quickly and effectively.

Java ensures absolute synergy between a device and its applications - delivering cohesive, scalable performance as well as simplified operation. It reduces the need for costly external hardware. It can provide solutions that meet your precise needs, if they change so too can the functionality of the iR3320i/iR2220i

WORK THE WAY YOU WANT

Canon is continuously developing embedded applications to run on iR3320i/iR2220i MEAP enabled devices. We aim to offer an extensive range of applications not only through Canon Business Consultants but also through our partnerships with leading independent software companies and developers.

DEVELOPER PROGRAMME

MEAP offers an exciting opportunity for independent software developers and in house development teams. It provides unlimited potential for expert skills in the office automation market, to bring true customisation to the multifunctional device. For further information on the Canon Business Solutions Developer programme visit: www.bsdp.canon-europa.com

* (CPCA - Common Peripheral Controlling Architecture)



You can take advantage of a wide range of powerful business and workflow benefits with these unique Java networked printer/copiers. Capture, manage and distributing documents has never been smarter, easier or more efficient.



FAST PRODUCTION

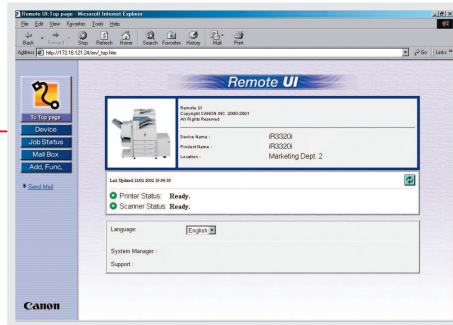
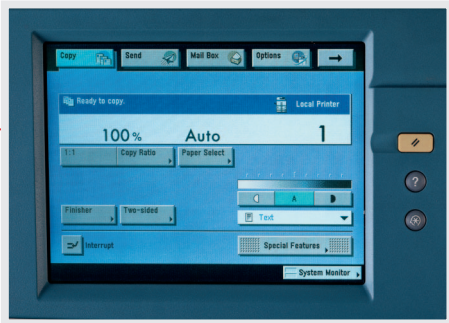
If production speed is an issue, you can speed it up significantly by connecting one iRi* device to another on your network. With remote copying, originals scanned by one system can be re-directed automatically to another machine on the network. Tandem copying allows two machines to split a job, with simultaneous printing doubling productivity.

*Tandem and remote copying feature can only be performed between two devices of the same type

SIMPLICITY AT EVERY STEP

The Canon iR3320i and iR2220i offer your business highly dependable network printing and digital copying productivity. Providing up to 33 pages per minute (iR3320i) output, these devices are more than capable of meeting all your copying and printing needs.

Same-speed tray-less duplexing boosts overall productivity still further. There's also a high capacity paper supply and full finishing options to provide professionally finished documents.



EXCEPTIONAL EASE OF USE

A large, full colour touch screen ensures stress free simplicity. It's intuitively structured, with a clear message display making easy work of even the most complex operations.

On-line operation is equally simple and ultra productive thanks to a remote user interface. With built-in web browser function, the Canon iR3320i/iR2220i interface allows instant access from every networked PC. Users can issue print commands, check on status and carry out a wide range of functions.

POWERFUL FINISHING

With two advanced finishing options available you can sort, group, staple and collate prints – or select saddle stitching and V-folding for professional booklet production. A handy hole-punching unit can also be added. Full finishing is supported directly from connected desktops. Providing superior performance from start to finish.



iR3320i/iR2220i MEAP Specifications

Base Specification

Type	Digital multi-function system (reader-printer separated type)
Functions	Print, copy, intelligent send, intelligent receive
Speed	33ppm A4 (iR3320i) 22 ppm A4 (iR2220i)
First-copy Time	5.8 seconds from platen glass/6.6 seconds from ADF
Warm-up Time	40 seconds or less
Acceptable Originals	Sheets, books, 3-dimensional items up to 2 kg
Max.Original size	A3
Max Copy Size	A3
Min Copy Size	A5R
Multiple Copies	1 to 999
Enlargement /Reduction	25% - 800% in 1% increments
Copy/Scanning Resolution	1200 dpi x 600 dpi / 600 dpi x 600 dpi
Printing Resolution	600 dpi x 600 dpi (2400 dpi x 600 dpi interpolated)
Halftone	256 gradations of grey
Image Server Memory	Standard 10 GB HDD, 256MB RAM
Max. Mail Boxes Supported	100
Duplexing	Automatic trayless. Duplex ADF.
Paper Supply	2 x paper cassettes: (500 shts), bypass (50 shts)
Paper Weights	64-80gsm ² (cassette) 64-128gsm ² (bypass)
Power Supply	230V,50/60Hz
Dimensions (WxDxH)	565 x 762 x 1040 mm
Weight (kg)	90kg

Communication Interface

Topology	Ethernet™ Token Ring™ (optional)
Speed	10/100Mbps Ethernet
Protocols Supported	TCP/IP,IPX/SPX™, EtherTalk, SMB for printing, Apple Talk

Intelligent Send Function

Preview	Multi-page Document Preview function
Access	Single Sign On (Windows 2000 Server),Single Device Log In (SDL)
Sending Methods	E-mail, File Server (FTP,SMB,NCP)
Address Book Capacity	LDAP, and ad hoc entry and storage. (Local storage 1800 addresses)
File Format	Single page TIFF & PDF, multi-page TIFF & PDF
Sending Sizes	A5-A3
Sending Resolution	100 x 100 dpi, 200 x 100 dpi, 200 x 200 dpi, 300 x 300 dpi, 200 x 400 dpi, 400 x 400 dpi, 600 x 600 dpi

Intelligent Copy Function

Tandem copy
Remote copy

Multi PDL Network Printing

Speed	33ppm A4 (iR3320i) 22 ppm A4 (iR2220i)
Resolution	Up to 2,400 x 600 dpi
PDL Support	PCL® 5e /PCL6 /Postscript®3™ emulation
Image Server Memory	10 GB disk,256MB RAM
Network OS	Novell Netware v3.2, 4.1, 4.11, 4.2,5; Windows® 95/98/NT/ 2000/XP; Solaris 1.x,2.25 or later; Apple system 7.6 or higher

Optional Accessories

Finisher J1 • Saddle Finisher-G1 • Hole Punching Unit J1/G1 • Cassette Feeding Unit-W1 • Plain Pedestal
• Paper Deck-L1 • Inner 2 way tray-A1 • Copy tray F1 • Card Reader-C1 • Super G3 FAX board-J1 • Token
Ring • USB Application Interface Board B1 • iR Security Kit A1

™ All company and/or product names are trademarks and/or registered trademarks of their respective manufacturers in their markets and/or countries. Canon reserves the right to change specifications without notice.

you can
Canon



Europe, Africa and Middle East
Canon Europa N.V.
P.O. Box 2262, 1180 EG Amstelveen,
the Netherlands
www.canon-europe.com

English Edition 0040W046
© Canon Europa N.V., 2003 (0903)

Canon (U.K.) Limited
Woodhatch, Reigate
Surrey RH2 8BF
Telephone No: 01737 220000
Facsimile No: 01737 220022
www.canon.co.uk

meap
POWERED BY

